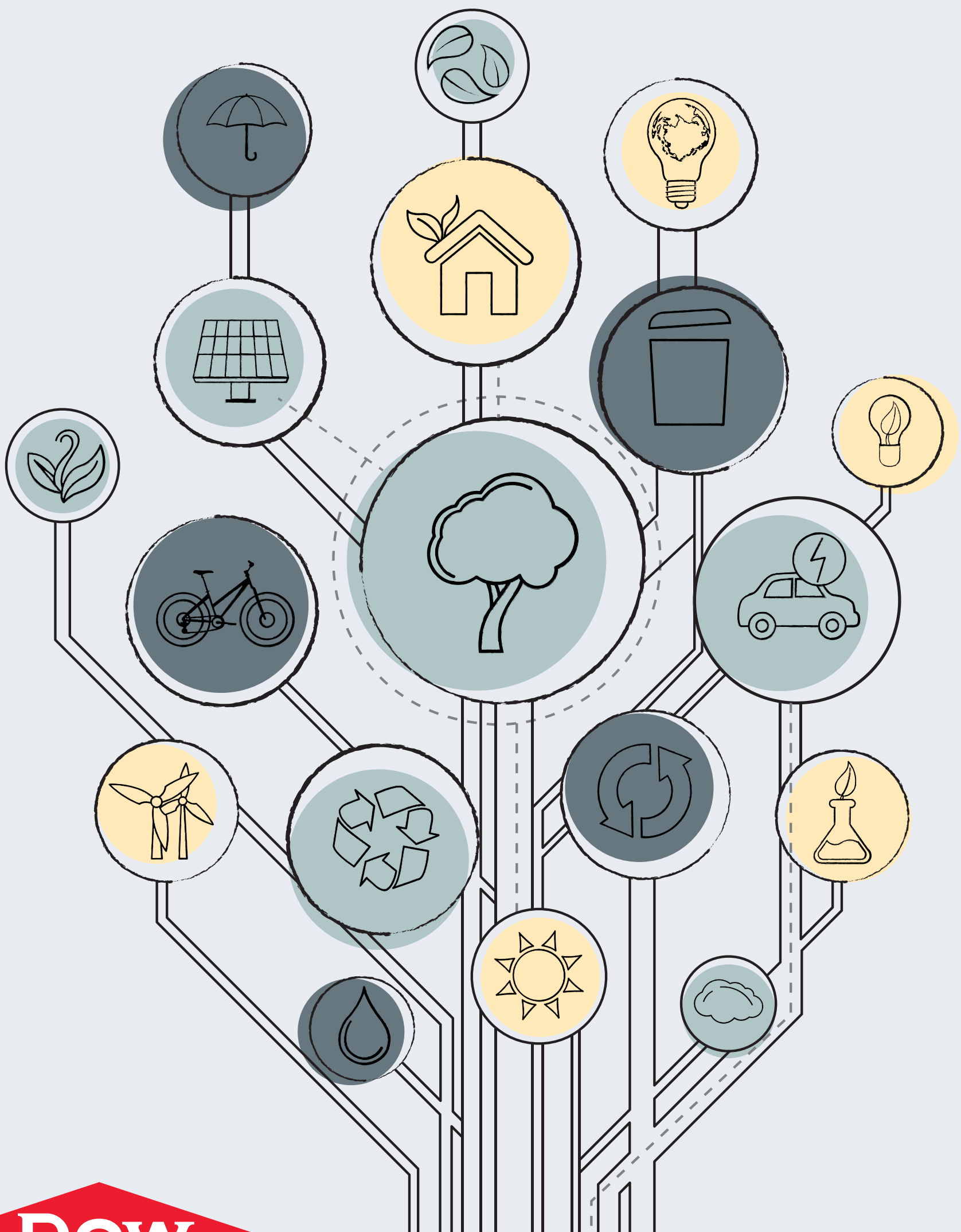


Fort Saskatchewan

PATH₂ZERO

DOW GROWTH & NET-ZERO TRANSFORMATION



DOW

®

About the Project

In 1897, The Dow Chemical Company began as a one-product start-up founded by Herbert H. Dow, a Canadian-born (Belleville, Ontario) industry pioneer. 125 years later, inspired by our founder's wonder and creativity, Dow has transformed into a science and technology leader, providing solutions to the world's most difficult challenges.

Dow has outlined a clear path to decarbonize our manufacturing facilities while growing and delivering low carbon products to customers.










Dow's proposed Fort Saskatchewan Path₂Zero expansion project will create the world's first net-zero carbon emissions integrated ethylene cracker and derivatives site with respect to scope 1 and 2 carbon dioxide emissions.

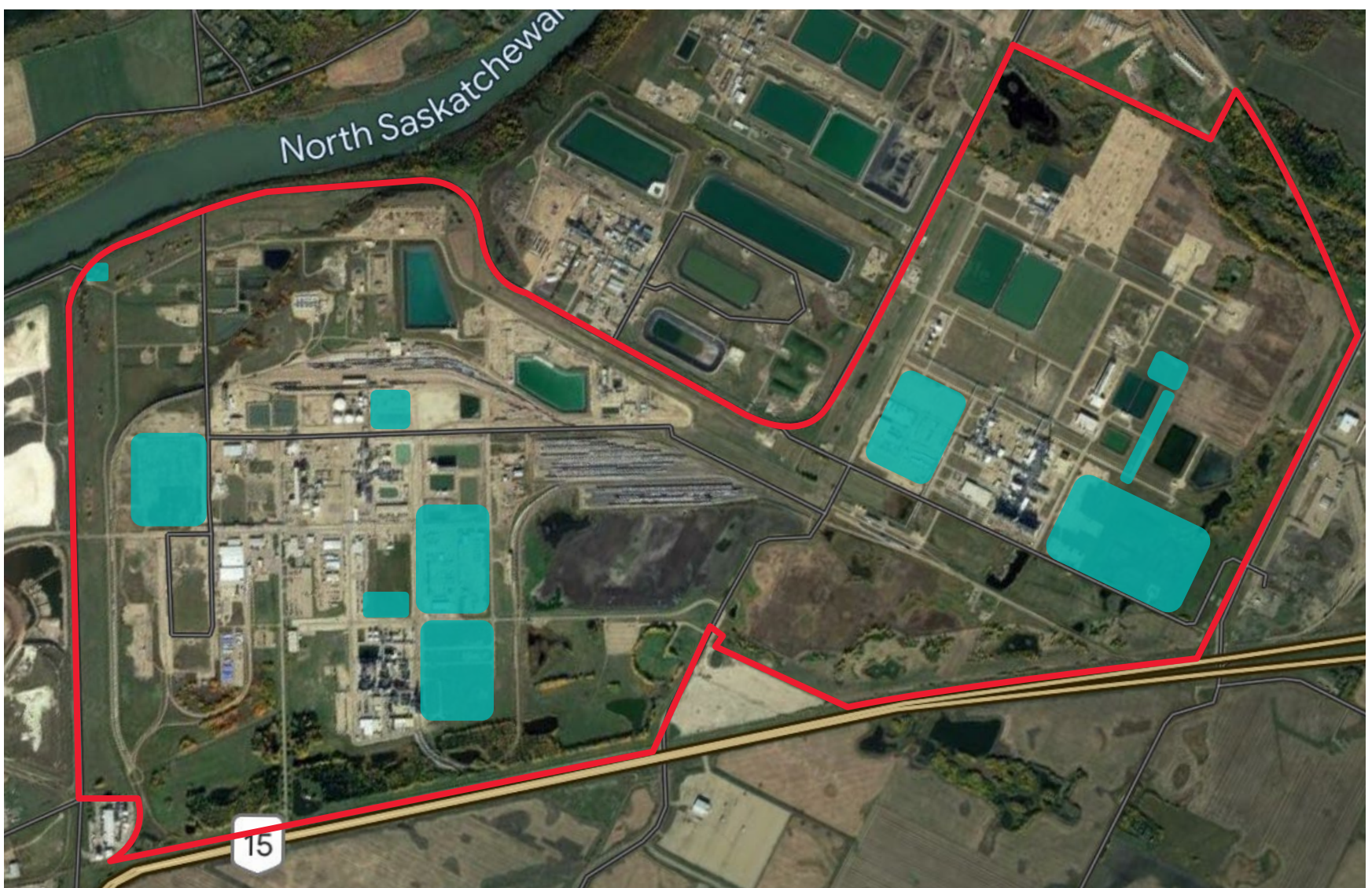
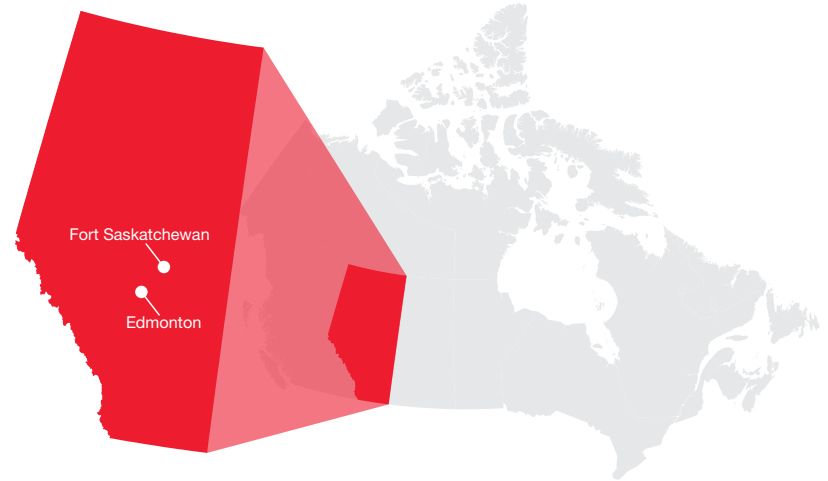
This project, which is subject to approval by Dow's Board of Directors and various regulatory agencies, will:

- Include a brownfield expansion and retrofit of Dow's existing manufacturing site in Fort Saskatchewan.
- Decarbonize approximately 20 percent of Dow's global ethylene capacity while growing polyethylene supply by about 15 percent.
- Triple Dow's ethylene and polyethylene capacity from the site, while retrofitting the site's existing assets to net-zero carbon emissions.
- Add approximately 1.8 million metric tonnes of ethylene capacity in a phased manner through 2030.
- Create approximately 7,000-8,000 jobs during peak construction and approximately 400-500 full-time jobs once operational.
- Produce and supply approximately 3.2 million metric tonnes of certified low- to zero-carbon emissions polyethylene and ethylene derivatives for customers and joint venture partners around the globe.
- Build on Dow's strong leadership position and allow us to meet the increasing needs of customers and brand owners seeking to lower the carbon footprint of their products.
- Build upon the progress Dow has already made by reducing net annual carbon emissions by an additional 15 percent, and net annual carbon emissions by approximately 30 percent by 2030 (since 2005).
- Highlight Alberta's growing global leadership in emissions-reducing technology like carbon capture utilization and storage.

Project Components

Subject to consultation, regulatory and board approvals, the proposed Fort Saskatchewan Path₂Zero expansion project will consist of:

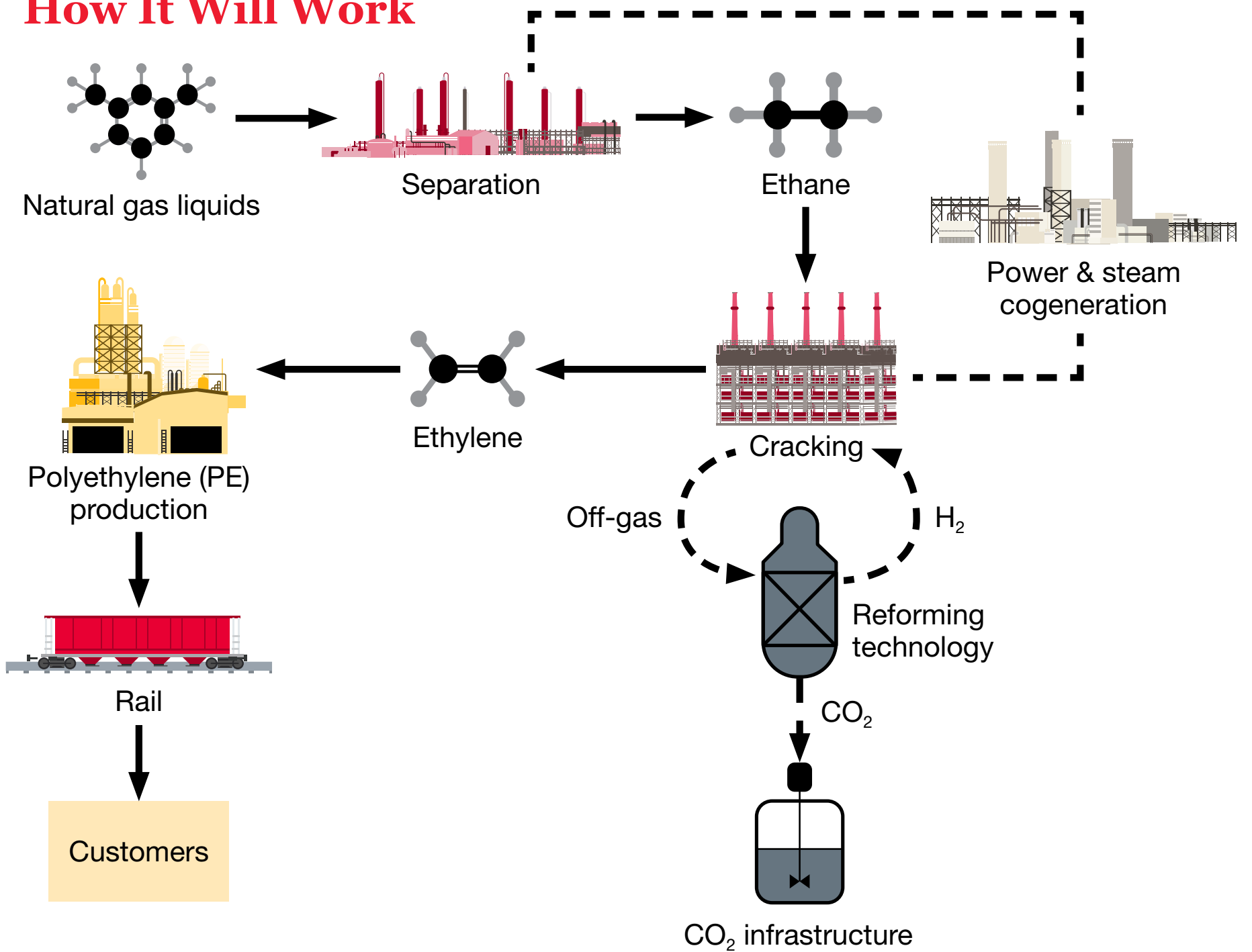
-  Hydrogen-fueled ethylene cracker
-  Expanded polyethylene production
-  Power & steam cogeneration
-  Carbon sequestration (off-site)
-  Site infrastructure upgrades including roads, rail and utilities
-  Control centers with office, storage, and maintenance facilities
-  Design consistent with world-class engineering and safety practices
-  Emergency response plans consistent with Dow, and industry, procedures and standards
-  Continuous monitoring with 24/7 staffed operations



Site Expansion

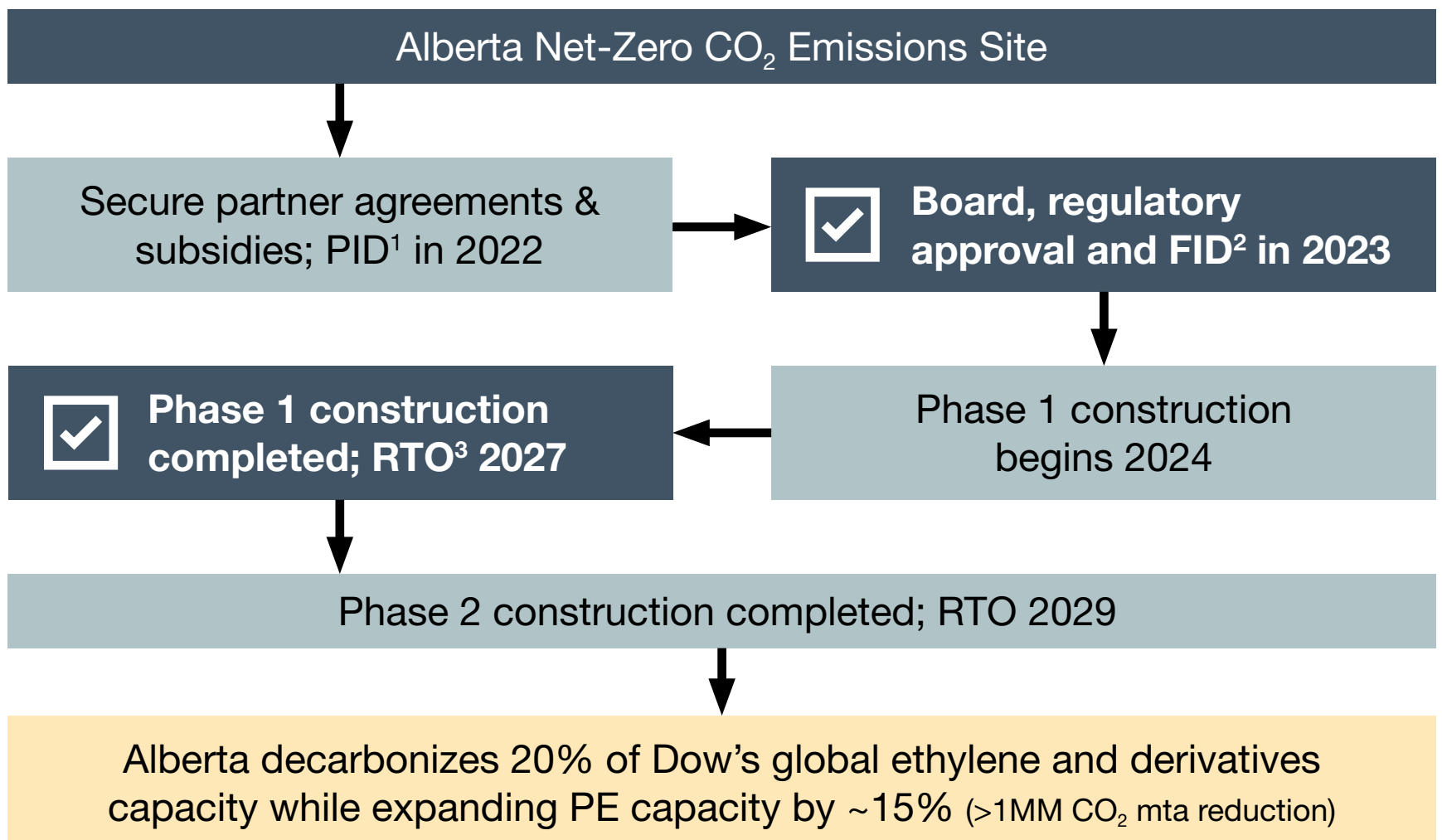
Site Perimeter

How It Will Work



Expected Project Timeline

Dow is working closely with stakeholders to ensure the most accurate and current project information is being shared.



¹ Preliminary Investment Decision

² Final Investment Decision

³ Return to Operations

Community Collaboration

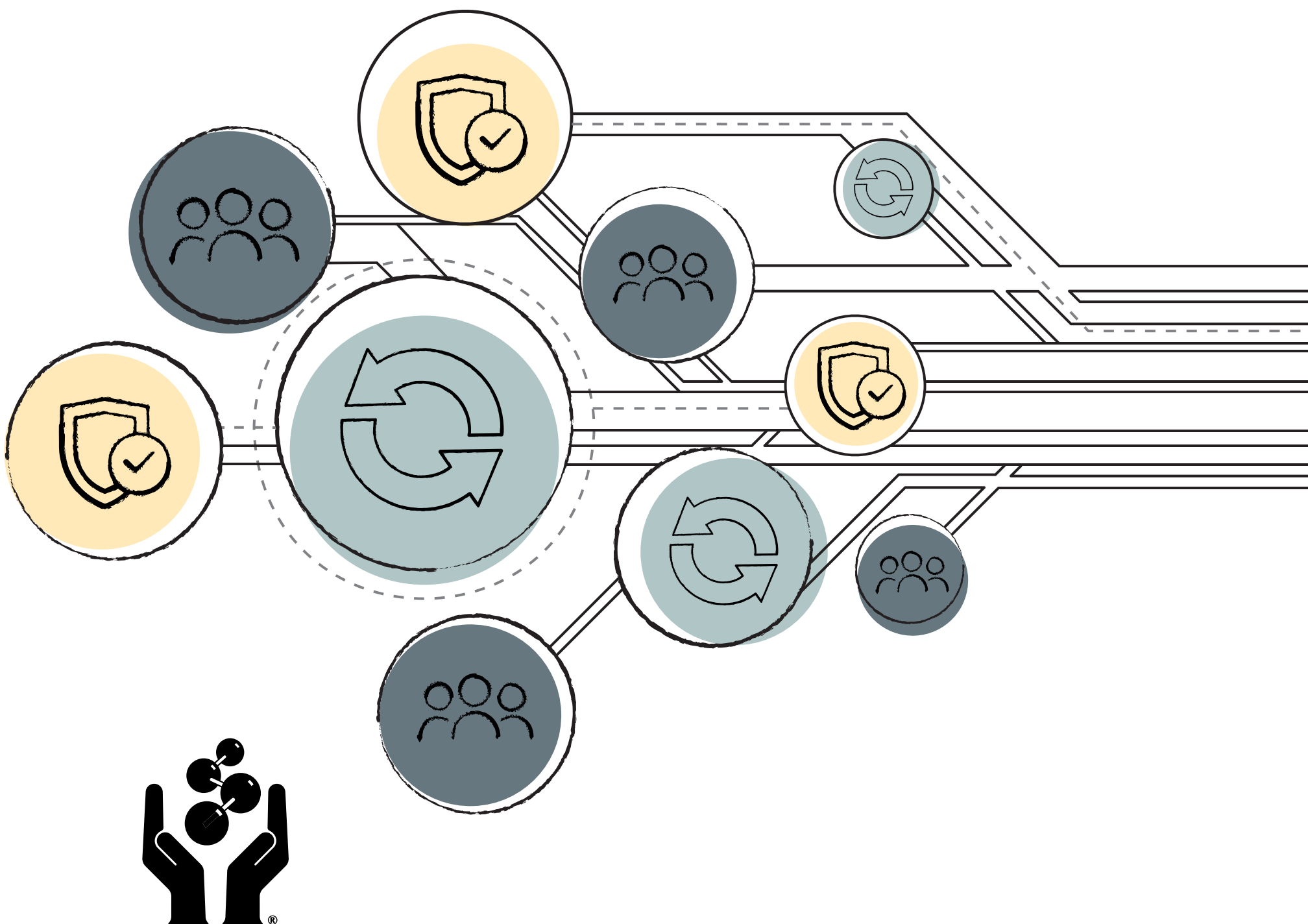
For more than 60 years in Alberta, we have been committed to playing an active role in helping shape the communities where we live and work. Our actions are aimed at strengthening Dow communities, where all people have the ability to thrive and be their best. We know this is good for business and society.

By sharing project information with neighbors and Indigenous communities, Dow gains valuable insight into local and regional interests. We make every attempt to use this information in our project planning and operations. We recognize the importance of building long term relationships based on trust and respect.

Committed to Safety

A commitment to safety, employee health and world-leading environmental performance has been a priority at Dow since our earliest days. Our goal is to have every worker go home safely at the end of their workday.

To ensure worker safety, Dow uses a comprehensive, integrated operating discipline management system that includes policies, requirements, processes, best practices and procedures related to our Environment, Health & Safety, Quality and Operations standards, and related external standards. Through this system, we lay the foundational expectations of hazard assessment and risk mitigation, aligned to Responsible Care®.



Permits and Approvals

The Project must be designed, operated and decommissioned in accordance with municipal, provincial and federal environmental regulations and laws. Dow will be conducting specific studies to assess environmental effects associated with key environmental concerns such as: air quality, noise, water, traffic, and waste.

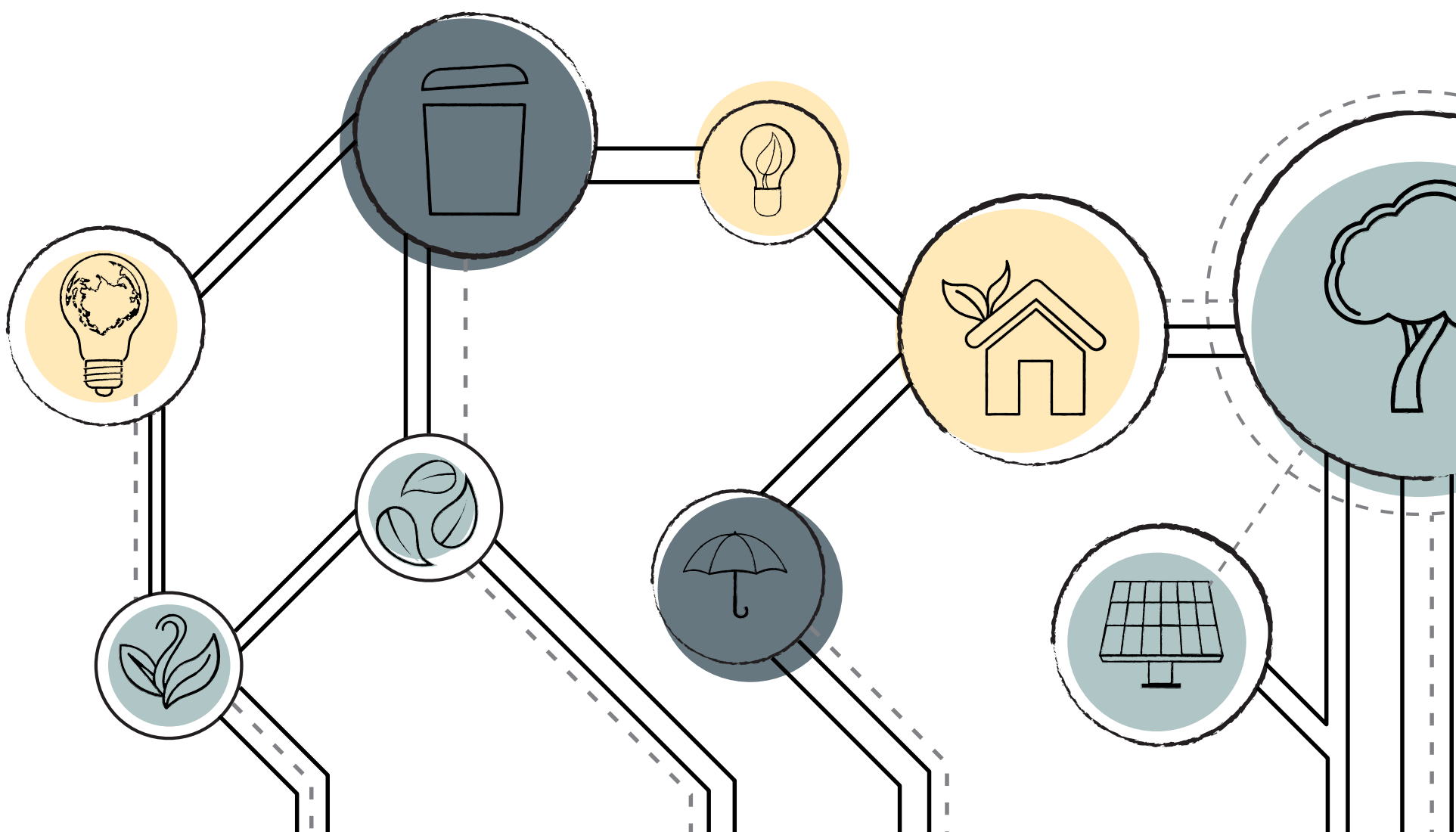
For this expansion project, Dow will apply for:

- An amendment to our existing Alberta Environmental Protection and Enhancement Act approval; and
- An amendment to our existing Alberta Water Act License to Divert and Use Water approval.

Air Quality. Air emissions must meet the requirements of the Alberta Ambient Air Quality Objectives and Guidelines established by Alberta Environment and Parks (AEP). Dow plans to ensure that air emissions are minimized from the operating equipment.

- Regional air quality is expected to be maintained with potential air emissions identified and controlled.
- A core feature of the project is a net-zero carbon emissions expansion including retrofit of existing site assets.

Noise. Dow will continue to participate in the Regional Noise Management Plan (RNMP) which is managed by the Northeast Capital Industrial Association (NCIA) to ensure industry in Alberta's Industrial Heartland complies with AER Directive 038 noise requirements.



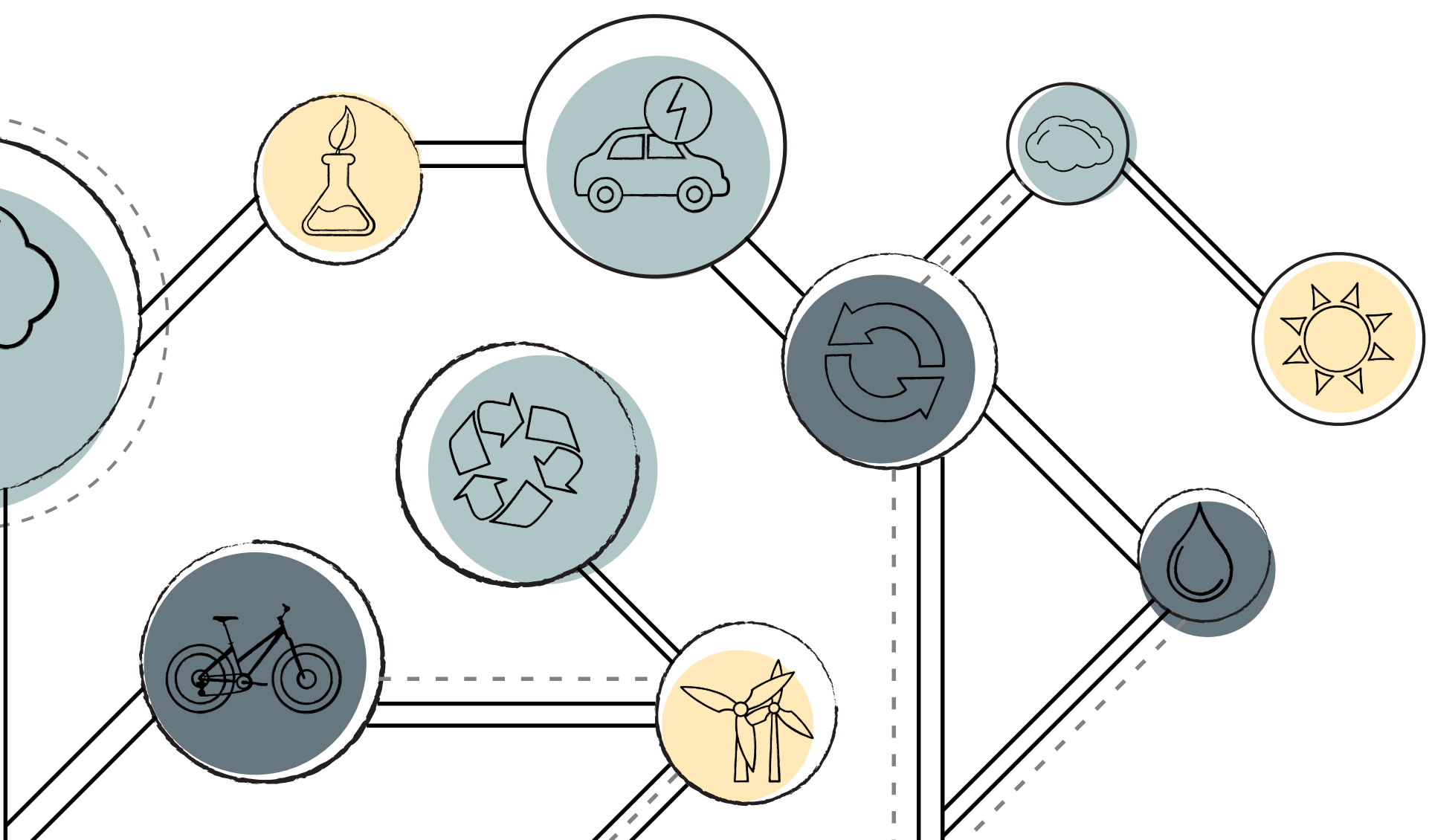
Water Use. Dow is aware of the vital importance of clean water to the province, and is planning to commission a facility which minimizes water use. Surface water will be collected and managed on the project. The collected surface water will be used in the plant when possible.

- Water use is expected to increase but is expected to remain within current water license, closer to maximum volume.
- Some increase of wastewater to the North Saskatchewan River is possible, but is anticipated to be within existing permitted levels.

Traffic. There will be an increase in traffic flow primarily during the construction phase of the project. This traffic flow will involve the movement of equipment, materials and manpower. Dow will work with municipal and provincial authorities to minimize the disturbance to residents and commuters in the area.

Waste. Dow will work to minimize waste and all waste generated will be disposed of appropriately and within government regulations and requirements.

In addition to these issues, other issues such as the potential effects of the project on land, historical resources and groundwater will be assessed as part of the AEP approval process.



About Us

Dow (NYSE:DOW) combines global breadth; asset integration and scale; focused innovation and materials science expertise; leading business positions; and environmental, social and governance (ESG) leadership to achieve profitable growth and deliver a sustainable future.

Our Company's ambition is to become the most innovative, customer centric, inclusive and sustainable materials science company in the world. Dow's portfolio of plastics, industrial intermediates, coatings and silicones businesses delivers a broad range of differentiated, science-based products and solutions for its customers in high-growth market segments, such as packaging, infrastructure, mobility and consumer applications. Dow operates 104 manufacturing sites in 31 countries and employs approximately 35,700 people.

In Canada, Dow employs approximately 700 people. Headquartered in Calgary, Alberta, Dow Canada has four manufacturing locations: Fort Saskatchewan and Prentiss (Lacombe County) in Alberta; and West Hill (Toronto) and St. Clair River (Corunna) in Ontario. Dow Canada's Eastern Canada Regional Sales Centre is located in downtown Toronto. Dow produces polyethylene in Alberta. The St. Clair River site modifies polyethylene and polypropylene. At the West Hill location, Dow manufactures water-based emulsions, which go into a variety of products, the biggest single application being latex paint.

Contact Us

Phone: 780-992-2894

Email: canada@dow.com

For more information, please visit www.dowcanada.com and follow us:



[@DowCanada](https://www.facebook.com/DowCanada)



[@Dow_Canada](https://twitter.com/Dow_Canada)

References to Dow or the Company mean Dow Inc. and its subsidiaries. For more information, please visit www.dow.com or follow [@DowNewsroom](https://twitter.com/DowNewsroom) on Twitter.

®™ Trademark of The Dow Chemical Company ("Dow") or an affiliated company of Dow.

© 2022 The Dow Chemical Company. All rights reserved.

2000017705

Form No. 066-00393-01-0722 S2D